

2013 ZONING MAP

City of Woodstock, Georgia

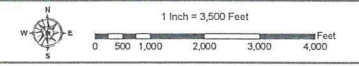
LEGEND

ZONING CODES	FORM BASED CODE
DT-CI - Civic/Institutional	NC-VIL - New Community Village
DT-CBD - Central Business District	NC-TCT - New Community Town Center
DT-GC - General Commercial	IN-VIL - Infill Village
DT-CMU - Commercial Mixed Use	IN-TCT - Infill Town Center
DT-OS - Open Space	County Boundary
DT-VLR - Very Low-Density Residential	City Limits
DT-LR - Low-Density Residential	Downtown District
DT-MR-A - Medium-Density Residential	Parcels
DT-RO - Residential/Office	County Parcels
NC - Neighborhood Commercial	Major Roads
GC - General Commercial	Streets
LI - Light Industrial	Railroads
HI - Heavy Industrial	Streams
OSI - Office Space/Institutional	Lakes
PUD - Planned Unit Development	
RD - Rural District	
R-1 - Single Family Residential	
R-2 - Single Family Residential	
R-3 - Medium Density Residential	
R-4 - High Density Residential	
SL - Senior Living	
DT-HO - Historic Zone	
RR - Railroad District	

DATE OF ADOPTION
July 22, 2013

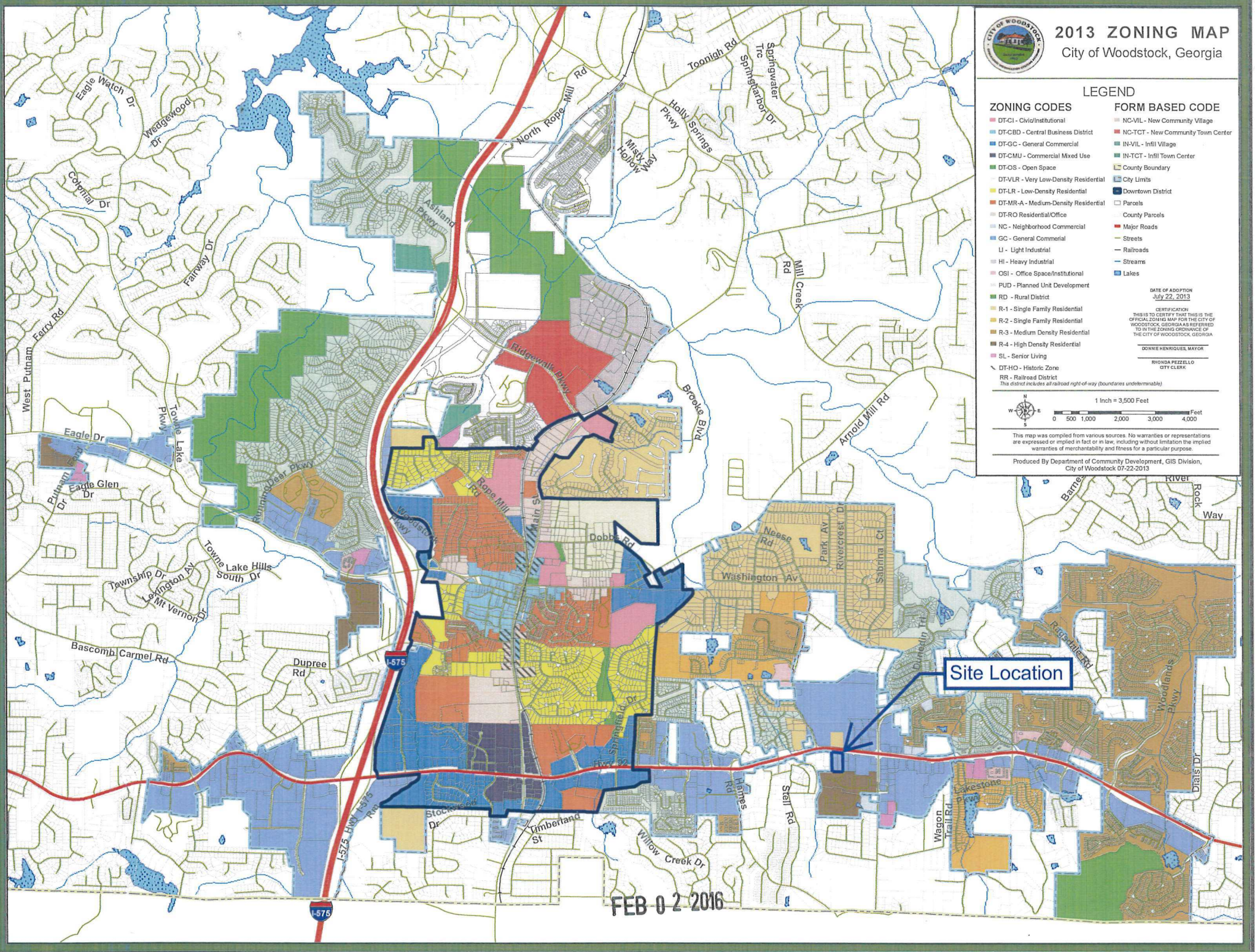
CERTIFICATION
THIS IS TO CERTIFY THAT THIS IS THE
OFFICIAL ZONING MAP FOR THE CITY OF
WOODSTOCK, GEORGIA AS REFERRED
TO IN THE ZONING ORDINANCE OF
THE CITY OF WOODSTOCK, GEORGIA

DOONNE HENRIQUES, MAYOR
RHONDA PEZZELLO
CITY CLERK



This map was compiled from various sources. No warranties or representations are expressed or implied in fact or in law, including without limitation the implied warranties of merchantability and fitness for a particular purpose.

Produced by Department of Community Development, GIS Division, City of Woodstock 07-22-2013



FEB 02 2016