

NOTES

1 THE PURPOSE OF THIS EXHIBIT IS TO SHOW ENCROACHMENTS INTO EXISTING SETBACKS

LOT 26 ENCROACHMENT INTO THE FRONT SETBACK WITH A PORCH AND ENCROACHMENT IN TO THE REAR SETBACK WITH A COVERED PATIO

LOT 27 ENCROACHMENT INTO THE REAR SETBACK WITH A DECK

LOT 28 ENCROACHMENT INTO THE SIDE SETBACK WITH A CHIMNEY



GRAPHIC SCALE
1" = 30'



DATE	AUGUST 11 2016
SCALE	1" = 30'
ACREAGE	
LAND LOTS	1062 1063 1099 & 1100
DISTRICT	15th SECTION 2nd
CITY	WOODSTOCK
COUNTY	CHEROKEE STATE GA
SURVEYED	MWR DRAWN MJS
CHECKED	APPROVED CAM
PROJECT #	14-404

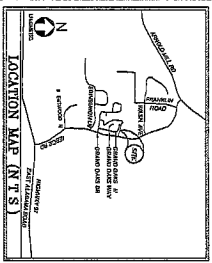
**ENCROACHMENT EXHIBIT FOR
OAKHURST SUBDIVISION**

LAND LOTS 1062 1063 1099 & 1100
15th DISTRICT 2nd SECTION CHEROKEE COUNTY GEORGIA
BEING IN THE CITY OF WOODSTOCK

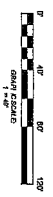
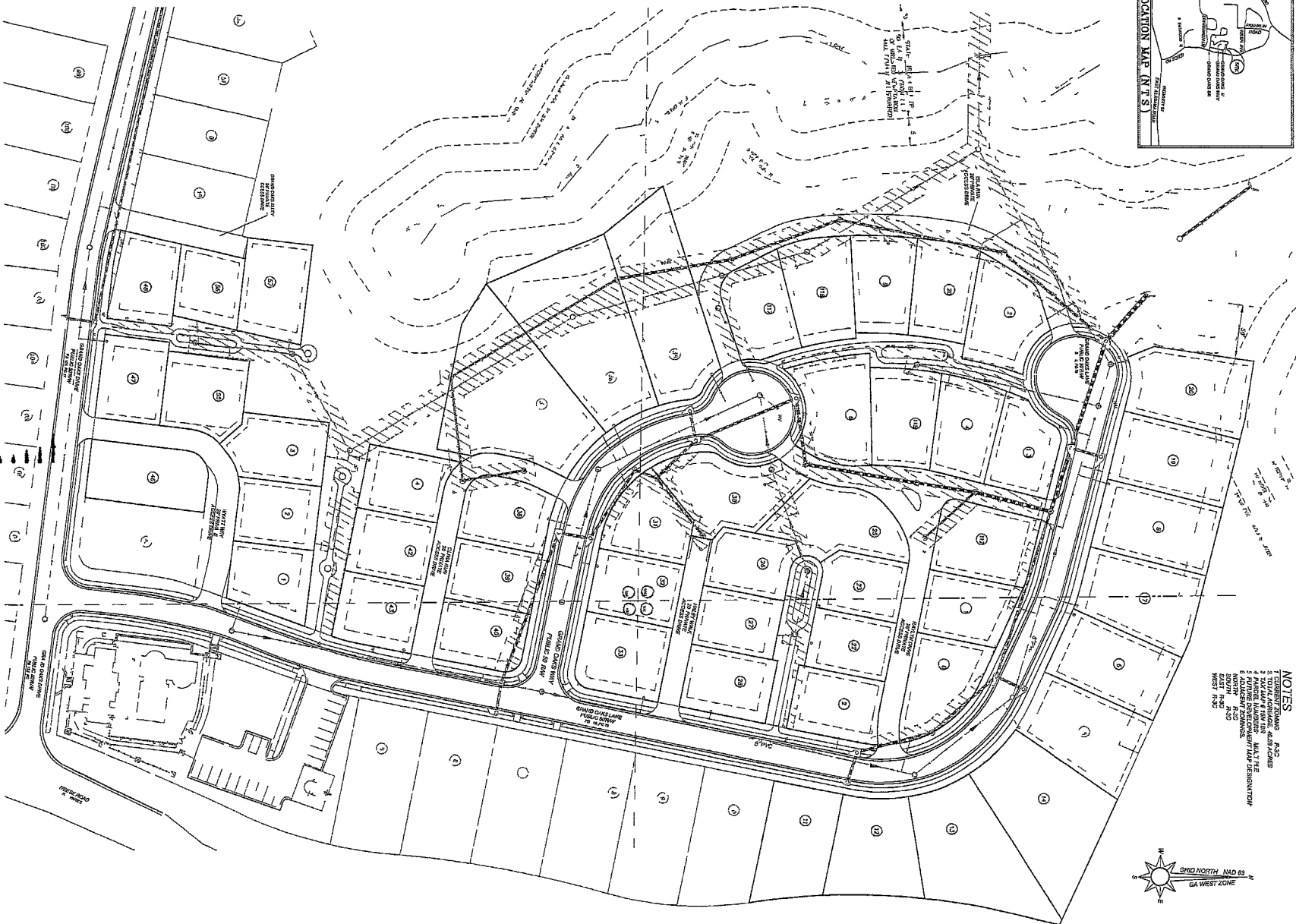
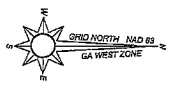
GA LAND SURVEYOR, LLC
GALANDSURVEYOR.COM
404-384-9577
1670 SACKETTS DR
LAWRENCEVILLE, GA 30043

SHEET
1
OF
1

SEP 02 2016



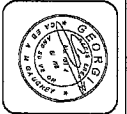
- NOTES**
1. ZONING: R-3C
 2. TOTAL LOT AREA: 4.5 ACRES
 3. TOTAL LOT FRONTAGE: 1,100 FT
 4. PARCEL NUMBER: 14-004
 5. ADJACENT ZONINGS: R-3C
 6. ADJACENT ZONINGS: SOUTH: R-3C
 7. ADJACENT ZONINGS: WEST: R-3C



SEP 02 2016

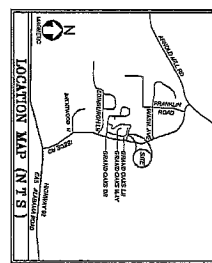
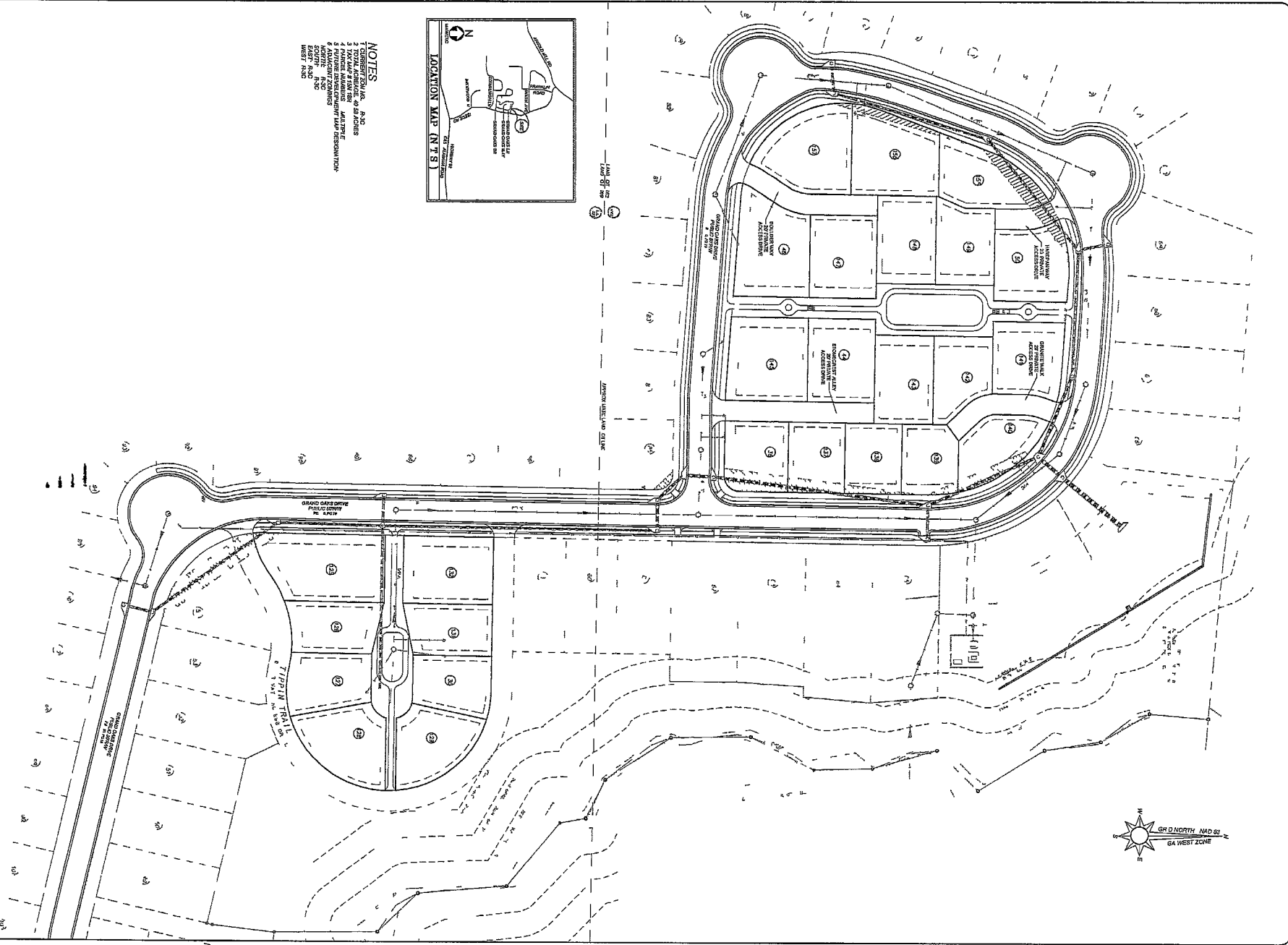
Job No. 14-004
 Drawing Title: ENCROACHMENT EXHIBIT
 SHEET NO. 1 OF 2

ENCROACHMENT EXHIBIT
OAKHURST SUBDIVISION
 LOCATION: 114 AND LOT 300, 400, 409 & 410
 580 D STREET, WEST SECTION
 CITY OF WINDERSTOCK, GEORGIA, 30 8

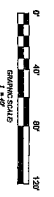


G.A. LAND SURVEYOR
 404-384-9577
 114004
 114004
 114004

DATE	PROJECT NO.	NO.	SCALE
09/02/16	14-004	1	AS SHOWN
09/02/16	14-004	2	AS SHOWN
09/02/16	14-004	3	AS SHOWN
09/02/16	14-004	4	AS SHOWN
09/02/16	14-004	5	AS SHOWN
09/02/16	14-004	6	AS SHOWN
09/02/16	14-004	7	AS SHOWN
09/02/16	14-004	8	AS SHOWN
09/02/16	14-004	9	AS SHOWN
09/02/16	14-004	10	AS SHOWN
09/02/16	14-004	11	AS SHOWN
09/02/16	14-004	12	AS SHOWN
09/02/16	14-004	13	AS SHOWN
09/02/16	14-004	14	AS SHOWN
09/02/16	14-004	15	AS SHOWN
09/02/16	14-004	16	AS SHOWN
09/02/16	14-004	17	AS SHOWN
09/02/16	14-004	18	AS SHOWN
09/02/16	14-004	19	AS SHOWN
09/02/16	14-004	20	AS SHOWN
09/02/16	14-004	21	AS SHOWN
09/02/16	14-004	22	AS SHOWN
09/02/16	14-004	23	AS SHOWN
09/02/16	14-004	24	AS SHOWN
09/02/16	14-004	25	AS SHOWN
09/02/16	14-004	26	AS SHOWN
09/02/16	14-004	27	AS SHOWN
09/02/16	14-004	28	AS SHOWN
09/02/16	14-004	29	AS SHOWN
09/02/16	14-004	30	AS SHOWN



- NOTES**
- 1 SUBMIT TO THE A.S.D.
 - 2 TOTAL AREA: 46.8 ACRES
 - 3 TOTAL LOTS: 24
 - 4 PAVEMENT: ASPHALT
 - 5 UTILITY LINES: AS SHOWN
 - 6 ADJACENT ZONING: R-10
 - 7 EAST ROAD
 - 8 WEST ROAD



SEP 02 2016

DATE: 11/04/16
 DRAWN BY: [Signature]
 CHECKED BY: [Signature]

NO.	DATE	REVISION
2		

ENROUCHMENT EXHIBIT
OAKHURST SUBDIVISION
 LOCATED IN LAND LOTS 1008, 1023, 1099 & 1100
 15th DISTRICT 2ND SECTION
 CITY OF WOODSTOCK, GEORGIA 30188



GA
LAND SURVEYOR
404-384-9577
 215 SANDWICH BLVD. SUITE 100
 LAWRENCEVILLE, GA 30046

DATE	APPROVED	DATE	BY	REVISION
11/04/16	[Signature]			

Side and Rear Yards May Not Be Required Next to Railroad. Within any non-residential district, the Planning Commission in its review of the site plan may waive the side and rear yard requirements when adjacent to the railroad rights-of-way if they determine the waiver will not adversely affect the area.

7.304

17. *Permitted Encroachment of Yards and Setbacks.* Architectural features such as cornices, eaves, steps, chimneys, gutters, and fire escapes may project no more than three (3) feet beyond any required setback line, except where such projections would obstruct driveways, which are or may be used for access for service and/or emergency vehicles; provided, however, that in the case of automobile service stations, motels, and similar uses which service the motoring public canopies shall be allowed over a driveway or walkway within the front yard not to extend from the principal building to a point any closer than fifteen (15) feet from the street right-of-way line.
18. *State Department of Transportation Approval.* All entrances or exits of any street or drive from or to any State highway shall be approved by the State Department of Transportation prior to the construction of such street or drive, or in the issuance of any building permit for any improvement to be served by such street or drive.
19. *Accessory Use Requirements.* The following requirements apply to accessory uses and structures regarding yard requirements:
 - a) Such structures shall not be permitted in any required front yard;
 - b) Where a corner lot adjoins in the rear of residential use, no accessory building shall be located closer to the side street right-of-way line than the principal building or closer than five (5) feet to the rear property line;
 - c) No garage nor other accessory building shall be located closer than five (5) feet to a side or rear lot line;
 - d) When an accessory building is attached to the principal building by a breezeway, passageway or similar means, it shall comply with the yard requirements of the principal building to which it is accessory;
 - e) Filling station pumps and pump islands where permitted may occupy the required yards, provided; however, that they are not less than fifteen (15) feet from the street right-of-way;
 - f) Accessory uses in an apartment development may include but shall not be limited to, laundry facilities for the convenience of residents. All accessory structures in an apartment development shall be of construction equal to and compatible with the principal use structures and shall meet principal use setback requirements;
 - g)

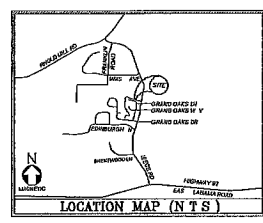
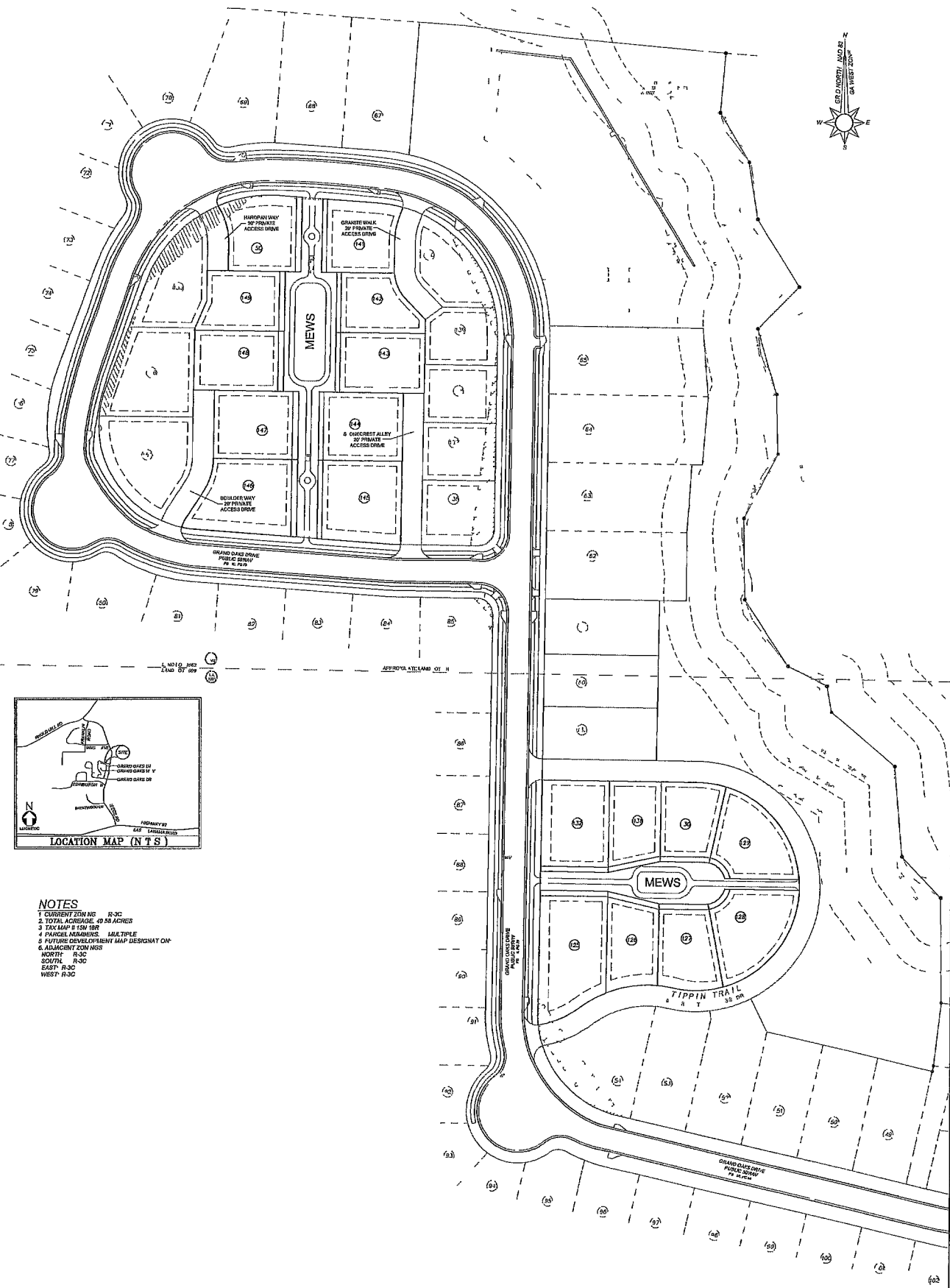
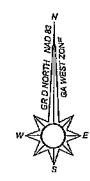
SEP 02 2016

OAKHURST PARCEL LIST - ENCROACHMENT VARIANCE (Condition)

Lot Number	Tax Identification Number (TIN)	Parcel Identification Number (PIN)	Subdivision	AlternateParcelID	Owner	Property Address	Property City	Property Zip
0001	15N18R 004	15-1100-0030	Oakhurst	15-1100-0030	BROCK BUILT HOMES LLC	2509 Wyatt Way	Woodstock	30188
0002	15N18R 002	15-1100 0031	Oakhurst	15-1100-0031	BROCK BUILT HOMES LLC	2507 Wyatt Way	Woodstock	30188
0003	15N18R 003	15-1100-0032	Oakhurst	15-1100-0032	BROCK BUILT HOMES LLC	2505 Wyatt Way	Woodstock	30188
0011	15N18R 011	15-1061-0034	Oakhurst	15-1061-0034	GDCI GA 4, LP	1832 Grand Oaks Ln	Woodstock	30188
0012	15N18R 012	15-1061-0031	Oakhurst	15 1061-0031	GDCI GA 4, LP	1834 Grand Oaks Ln	Woodstock	30188
0013	15N18R 013	15-1061-0030	Oakhurst	15-1061-0030	GDCI GA 4, LP	1836 Grand Oaks Ln	Woodstock	30188
0014	15N18R 014	15-1061-0033	Oakhurst	15-1061-0033	GDCI GA 4, LP	1838 Grand Oaks Ln	Woodstock	30188
0016	15N18R 016	15-1061-0036	Oakhurst	15-1061-0036	BROCK BUILT HOMES LLC	1842 Grand Oaks Ln	Woodstock	30188
0017	15N18R 017	15-1061-0037	Oakhurst	15 1061 0037	BROCK BUILT HOMES LLC	1844 Grand Oaks Ln	Woodstock	30188
0018	15N18R 018	15 1061-0038	Oakhurst	15-1061 0038	BROCK BUILT HOMES LLC	1846 Grand Oaks Ln	Woodstock	30188
0019	15N18R 019	15-1061 0039	Oakhurst	15 1061 0039	BROCK BUILT HOMES LLC	1848 Grand Oaks Ln	Woodstock	30188
0020	15N18R 020	15-1061 0040	Oakhurst	15-1061-0040	BROCK BUILT HOMES LLC	1850 Grand Oaks Ln	Woodstock	30188
0021	15N18R 021	15-1061-0041	Oakhurst	15-1061-0041	BROCK BUILT HOMES LLC	2101 Raylyn Dr	Woodstock	30188
0022	15N18R 022	15-1061-0042	Oakhurst	15-1061-0042	BROCK BUILT HOMES LLC	2103 Raylyn Dr	Woodstock	30188
0023	15N18R 023	15-1061-0043	Oakhurst	15 1061 0043	BROCK BUILT HOMES LLC	2105 Raylyn Dr	Woodstock	30188
0025	15N18R 025	15-1061-0044	Oakhurst	15 1061-0044	BROCK BUILT HOMES LLC	Fall Dr	Woodstock	30188
0026	15N18R 026	15-1061-0045	Oakhurst	15-1061-0045	BROCK BUILT HOMES LLC	2004 Haley Walk	Woodstock	30188
0027	15N18R 027	15-1061-0046	Oakhurst	15-1061-0046	BROCK BUILT HOMES LLC	2002 Haley Walk	Woodstock	30188
0028	15N18R 028	15-1061-0047	Oakhurst	15-1061-0047	BROCK BUILT HOMES LLC	2000 Haley Walk	Woodstock	30188
0030	15N18R 030	15-1061-0048	Oakhurst	15-1061-0048	BROCK BUILT HOMES LLC	2006 Haley Walk	Woodstock	30188
0031	15N18R 031	15-1100 0044	Oakhurst	15-1100-0044	BROCK BUILT HOMES LLC	2005 Haley Walk	Woodstock	30188
0032	15N18R 032	15-1100-0042	Oakhurst	15 1100 0042	BROCK BUILT HOMES LLC	2003 Haley Walk	Woodstock	30188
0033	15N18R 033	15-1100-0041	Oakhurst	15 1100 0041	BROCK BUILT HOMES LLC	2001 Haley Walk	Woodstock	30188
0035	15N18R 035	15-1100-0043	Oakhurst	15 1100 0043	BROCK BUILT HOMES LLC	1911 Grand Oaks Way	Woodstock	30188
0036	15N18R 036	15 1100 0040	Oakhurst	15-1100-0040	BROCK BUILT HOMES LLC	1909 Grand Oaks Way	Woodstock	30188
0037	15N18R 037	15-1100 0039	Oakhurst	15-1100-0039	BROCK BUILT HOMES LLC	1907 Grand Oaks Way	Woodstock	30188
0038	15N18R 038	15-1100-0038	Oakhurst	15 1100 0038	BROCK BUILT HOMES LLC	2404 Olivia Run	Woodstock	30188
0039	15N18R 039	15-1100-0037	Oakhurst	15 1100 0037	BROCK BUILT HOMES LLC	2402 Olivia Run	Woodstock	30188
0040	15N18R 040	15 1100 0036	Oakhurst	15-1100-0036	BROCK BUILT HOMES LLC	2400 Olivia Run	Woodstock	30188
0041	15N18R 041	15 1100 0035	Oakhurst	15-1100-0035	BROCK BUILT HOMES LLC	2405 Olivia Run	Woodstock	30188
0042	15N18R 042	15 1100 0034	Oakhurst	15-1100-0034	BROCK BUILT HOMES LLC	2403 Olivia Run	Woodstock	30188
0043	15N18R 043	15-1100-0033	Oakhurst	15-1100-0033	BROCK BUILT HOMES LLC	2401 Olivia Run	Woodstock	30188
0046	15N18R 046	15 1100 0012	Oakhurst	15-1100-0012	GDCI GA 4, LP	1710 Grand Oaks Dr	Woodstock	30188
0047	15N18R 047	15 1100 0025	Oakhurst	15-1100 0025	GDCI GA 4, LP	1712 Grand Oaks Dr	Woodstock	30188
0048	15N18R 048	15-1100 0026	Oakhurst	15-1100-0026	GDCI GA 4, LP	1714 Grand Oaks Dr	Woodstock	30188
0055	15N18R 055	15-1100-0028	Oakhurst	15-1100 0028	BROCK BUILT HOMES LLC	2503 Wyatt Way	Woodstock	30188
0056	15N18R 056	15-1100-0027	Oakhurst	15 1100 0027	BROCK BUILT HOMES LLC	2602 Grand Oaks Aly	Woodstock	30188
0057	15N18R 057	15-1100 0029	Oakhurst	15-1100-0029	BROCK BUILT HOMES LLC	2604 Grand Oaks Aly	Woodstock	30188
0110	15N18R 110	15-1061-0049	Oakhurst	15-1061-0049	BROCK BUILT HOMES LLC	2100 Raylyn Dr	Woodstock	30188
0111	15N18R 111	15-1061-0050	Oakhurst	15-1061-0050	BROCK BUILT HOMES LLC	2104 Raylyn Dr	Woodstock	30188
0112	15N18R 112	15-1061-0051	Oakhurst	15-1061-0051	BROCK BUILT HOMES LLC	2106 Raylyn Dr	Woodstock	30188
0113	15N18R 113	15-1061-0052	Oakhurst	15-1061-0052	BROCK BUILT HOMES LLC	2207 Fall Dr	Woodstock	30188
0114	15N18R 114	15-1061-0053	Oakhurst	15-1061 0053	BROCK BUILT HOMES LLC	2205 Fall Dr	Woodstock	30188
0115	15N18R 115	15-1061-0054	Oakhurst	15 1061 0054	BROCK BUILT HOMES LLC	2203 Fall Dr	Woodstock	30188
0116	15N18R 116	15-1061-0055	Oakhurst	15-1061 0055	BROCK BUILT HOMES LLC	2201 Fall Dr	Woodstock	30188
0117	15N18R 117	15-1062-0038	Oakhurst	15 1062 0038	BROCK BUILT HOMES LLC	2300 Isla Run	Woodstock	30188
0118	15N18R 118	15-1062 0039	Oakhurst	15 1062 0039	BROCK BUILT HOMES LLC	2302 Isla Run	Woodstock	30188
0119	15N18R 119	15-1062-0040	Oakhurst	15-1062-0040	BROCK BUILT HOMES LLC	2304 Isla Run	Woodstock	30188

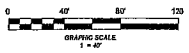
OAKHURST PARCEL LIST - ENCROACHMENT VARIANCE (Condition)

0120	15N18R 120	15-1062 0041	Oakhurst	15-1062 0041	BROCK BUILT HOMES LLC	2306 Isla Run	Woodstock	30188
0121	15N18R 121	15-1062-0042	Oakhurst	15-1062-0042	BROCK BUILT HOMES LLC	2308 Isla Run	Woodstock	30188
0136	15N18R 136	15 1062-0044	Oakhurst Phase 3B	15-1062 0044	BROCK BUILT HOMES LLC	2800 Stonecrest Aly	Woodstock	30188
0137	15N18R 137	15 1062 0045	Oakhurst Phase 3B	15-1062 0045	BROCK BUILT HOMES LLC	2802 Stonecrest Aly	Woodstock	30188
0138	15N18R 138	15-1062 0046	Oakhurst Phase 3B	15-1062 0046	BROCK BUILT HOMES LLC	2804 Stonecrest Aly	Woodstock	30188
0139	15N18R 139	15-1062-0047	Oakhurst Phase 3B	15-1062-0047	BROCK BUILT HOMES LLC	2703 Granite Walk	Woodstock	30188
0140	15N18R 140	15-1062-0048	Oakhurst Phase 3B	15-1062 0048	BROCK BUILT HOMES LLC	2701 Granite Walk	Woodstock	30188
0141	15N18R 141	15 1062-0049	Oakhurst Phase 3B	15-1062-0049	BROCK BUILT HOMES LLC	2700 Granite Walk	Woodstock	30188
0142	15N18R 142	15-1062 0050	Oakhurst Phase 3B	15 1062-0050	BROCK BUILT HOMES LLC	2702 Granite Walk	Woodstock	30188
0143	15N18R 143	15 1062-0051	Oakhurst Phase 3B	15-1062 0051	BROCK BUILT HOMES LLC	2805 Stonecrest Aly	Woodstock	30188
0144	15N18R 144	15 1062 0052	Oakhurst Phase 3B	15 1062-0052	BROCK BUILT HOMES LLC	2803 Stonecrest Aly	Woodstock	30188
0145	15N18R 145	15 1062 0053	Oakhurst Phase 3B	15-1062 0053	BROCK BUILT HOMES LLC	2801 Stonecrest Aly	Woodstock	30188
0146	15N18R 146	15-1062 0055	Oakhurst Phase 3B	15-1062-0055	BROCK BUILT HOMES LLC	2600 Boulder Way	Woodstock	30188
0147	15N18R 147	15-1062 0056	Oakhurst Phase 3B	15-1062 0056	BROCK BUILT HOMES LLC	2602 Boulder Way	Woodstock	30188
0148	15N18R 148	15-1062-0057	Oakhurst Phase 3B	15-1062-0057	BROCK BUILT HOMES LLC	2604 Boulder Way	Woodstock	30188
0149	15N18R 149	15-1062-0058	Oakhurst Phase 3B	15 1062 0058	BROCK BUILT HOMES LLC	2503 Hardpan Way	Woodstock	30188
0150	15N18R 150	15 1062-0059	Oakhurst Phase 3B	15-1062 0059	BROCK BUILT HOMES LLC	2501 Hardpan Way	Woodstock	30188
0155	15N18R 155	15 1062-0060	Oakhurst Phase 3B	15-1062-0060	BROCK BUILT HOMES LLC	2500 Hardpan Way	Woodstock	30188
0156	15N18R 156	15 1062 0061	Oakhurst Phase 3B	15 1062-0061	BROCK BUILT HOMES LLC	2603 Boulder Way	Woodstock	30188
0157	15N18R 157	15 1062-0062	Oakhurst Phase 3B	15 1062 0062	BROCK BUILT HOMES LLC	2601 Boulder Way	Woodstock	30188



- NOTES**
- 1 CURRENT ZONING R-3C
 - 2 TOTAL ACRES 40.81 ACRES
 - 3 TAX MAP 8 (SM 18)
 - 4 PARCEL NUMBERS MULTIPLE
 - 5 FUTURE DEVELOPMENT MAP DESIGNATION ON
 - 6 ADJACENT ZONING NORTH R-3C SOUTH R-3C EAST R-3C WEST R-3C

SEP 02 2016



JOB NO. 14 404
DRAWING NO. Setback Exhibit 3B
SHEET NO. 2 OF 2

SETBACK EXHIBIT
OAKHURST SUBDIVISION
LOCATED IN LAND LOTS 1062, 1063, 1099 & 1100
154 DISTRICT 2ND SECTION
CHEROKEE COUNTY
CITY OF WOODSTOCK GEORGIA 30085



GA LAND SURVEYOR
404-384-9577
GA LAND SURVEYOR LLC
781 SHANDORFWEISBERG LN
LAWRENCEVILLE, GA 30043

DATE	ISSUE	NO.	DESCRIPTION	DATE
APRIL 20 8	1-40			
LAND LOT 1062, 1063, 1099 & 1100				
DISTRICT 2ND SECTION				
CITY OF WOODSTOCK				
COUNTY CHIEF	STATE	GEORGIA		
SURVEYOR	DRAWING	DATE		
CHECKED:	APPROVED:	CAM		

OAKHURST PARCEL LIST - SETBACKS - MEWS LOTS ONLY

Lot Number	Tax Identification Number (TIN)	Parcel Identification Number (PIN)	Subdivision	AlternateParcelID	Owner	Property Address	Property City	Property Zip
0001	15N18R 004	15-1100 0030	Oakhurst	15-1100-0030	BROCK BUILT HOMES LLC	2509 Wyatt Way	Woodstock	30188
0002	15N18R 002	15 1100 0031	Oakhurst	15 1100-0031	BROCK BUILT HOMES LLC	2507 Wyatt Way	Woodstock	30188
0003	15N18R 003	15 1100-0032	Oakhurst	15-1100 0032	BROCK BUILT HOMES LLC	2505 Wyatt Way	Woodstock	30188
0021	15N18R 021	15-1061 0041	Oakhurst	15 1061 0041	BROCK BUILT HOMES LLC	2101 Raylyn Dr	Woodstock	30188
0022	15N18R 022	15-1061-0042	Oakhurst	15-1061 0042	BROCK BUILT HOMES LLC	2103 Raylyn Dr	Woodstock	30188
0023	15N18R 023	15-1061 0043	Oakhurst	15 1061 0043	BROCK BUILT HOMES LLC	2105 Raylyn Dr	Woodstock	30188
0025	15N18R 025	15 1061-0044	Oakhurst	15-1061-0044	BROCK BUILT HOMES LLC	Fall Dr	Woodstock	30188
0026	15N18R 026	15-1061-0045	Oakhurst	15-1061 0045	BROCK BUILT HOMES LLC	2004 Haley Walk	Woodstock	30188
0027	15N18R 027	15-1061-0046	Oakhurst	15-1061-0046	BROCK BUILT HOMES LLC	2002 Haley Walk	Woodstock	30188
0028	15N18R 028	15 1061-0047	Oakhurst	15-1061-0047	BROCK BUILT HOMES LLC	2000 Haley Walk	Woodstock	30188
0038	15N18R 038	15 1100-0038	Oakhurst	15 1100-0038	BROCK BUILT HOMES LLC	2404 Olivia Run	Woodstock	30188
0039	15N18R 039	15 1100-0037	Oakhurst	15-1100 0037	BROCK BUILT HOMES LLC	2402 Olivia Run	Woodstock	30188
0040	15N18R 040	15 1100 0036	Oakhurst	15 1100 0036	BROCK BUILT HOMES LLC	2400 Olivia Run	Woodstock	30188
0041	15N18R 041	15-1100 0035	Oakhurst	15-1100 0035	BROCK BUILT HOMES LLC	2405 Olivia Run	Woodstock	30188
0042	15N18R 042	15-1100 0034	Oakhurst	15-1100-0034	BROCK BUILT HOMES LLC	2403 Olivia Run	Woodstock	30188
0043	15N18R 043	15 1100-0033	Oakhurst	15 1100 0033	BROCK BUILT HOMES LLC	2401 Olivia Run	Woodstock	30188
0047	15N18R 047	15 1100 0025	Oakhurst	15 1100 0025	GDCI GA 4, LP	1712 Grand Oaks Dr	Woodstock	30188
0048	15N18R 048	15 1100-0026	Oakhurst	15 1100 0026	GDCI GA 4, LP	1714 Grand Oaks Dr	Woodstock	30188
0055	15N18R 055	15 1100 0028	Oakhurst	15-1100 0028	BROCK BUILT HOMES LLC	2503 Wyatt Way	Woodstock	30188
0056	15N18R 056	15-1100 0027	Oakhurst	15-1100 0027	BROCK BUILT HOMES LLC	2602 Grand Oaks Aly	Woodstock	30188
0057	15N18R 057	15-1100-0029	Oakhurst	15 1100 0029	BROCK BUILT HOMES LLC	2604 Grand Oaks Aly	Woodstock	30188
0113	15N18R 113	15-1061 0052	Oakhurst	15-1061-0052	BROCK BUILT HOMES LLC	2207 Fall Dr	Woodstock	30188
0114	15N18R 114	15-1061-0053	Oakhurst	15-1061-0053	BROCK BUILT HOMES LLC	2205 Fall Dr	Woodstock	30188
0115	15N18R 115	15-1061-0054	Oakhurst	15-1061-0054	BROCK BUILT HOMES LLC	2203 Fall Dr	Woodstock	30188
0116	15N18R 116	15 1061-0055	Oakhurst	15 1061 0055	BROCK BUILT HOMES LLC	2201 Fall Dr	Woodstock	30188
0117	15N18R 117	15-1062 0038	Oakhurst	15 1062 0038	BROCK BUILT HOMES LLC	2300 Isla Run	Woodstock	30188
0118	15N18R 118	15-1062 0039	Oakhurst	15-1062-0039	BROCK BUILT HOMES LLC	2302 Isla Run	Woodstock	30188
0119	15N18R 119	15-1062-0040	Oakhurst	15-1062 0040	BROCK BUILT HOMES LLC	2304 Isla Run	Woodstock	30188
0120	15N18R 120	15-1062 0041	Oakhurst	15 1062-0041	BROCK BUILT HOMES LLC	2306 Isla Run	Woodstock	30188
0121	15N18R 121	15 1062 0042	Oakhurst	15 1062 0042	BROCK BUILT HOMES LLC	2308 Isla Run	Woodstock	30188
0141	15N18R 141	15 1062 0049	Oakhurst Phase 3B	15 1062 0049	BROCK BUILT HOMES LLC	2700 Granite Walk	Woodstock	30188
0142	15N18R 142	15 1062 0050	Oakhurst Phase 3B	15 1062 0050	BROCK BUILT HOMES LLC	2702 Granite Walk	Woodstock	30188
0143	15N18R 143	15-1062 0051	Oakhurst Phase 3B	15-1062 0051	BROCK BUILT HOMES LLC	2805 Stonecrest Aly	Woodstock	30188
0144	15N18R 144	15 1062-0052	Oakhurst Phase 3B	15 1062 0052	BROCK BUILT HOMES LLC	2803 Stonecrest Aly	Woodstock	30188
0145	15N18R 145	15-1062-0053	Oakhurst Phase 3B	15-1062 0053	BROCK BUILT HOMES LLC	2801 Stonecrest Aly	Woodstock	30188
0146	15N18R 146	15-1062 0055	Oakhurst Phase 3B	15 1062 0055	BROCK BUILT HOMES LLC	2600 Boulder Way	Woodstock	30188
0147	15N18R 147	15-1062-0056	Oakhurst Phase 3B	15-1062-0056	BROCK BUILT HOMES LLC	2602 Boulder Way	Woodstock	30188
0148	15N18R 148	15-1062-0057	Oakhurst Phase 3B	15-1062-0057	BROCK BUILT HOMES LLC	2604 Boulder Way	Woodstock	30188
0149	15N18R 149	15-1062-0058	Oakhurst Phase 3B	15-1062-0058	BROCK BUILT HOMES LLC	2503 Hardpan Way	Woodstock	30188
0150	15N18R 150	15-1062-0059	Oakhurst Phase 3B	15-1062-0059	BROCK BUILT HOMES LLC	2501 Hardpan Way	Woodstock	30188