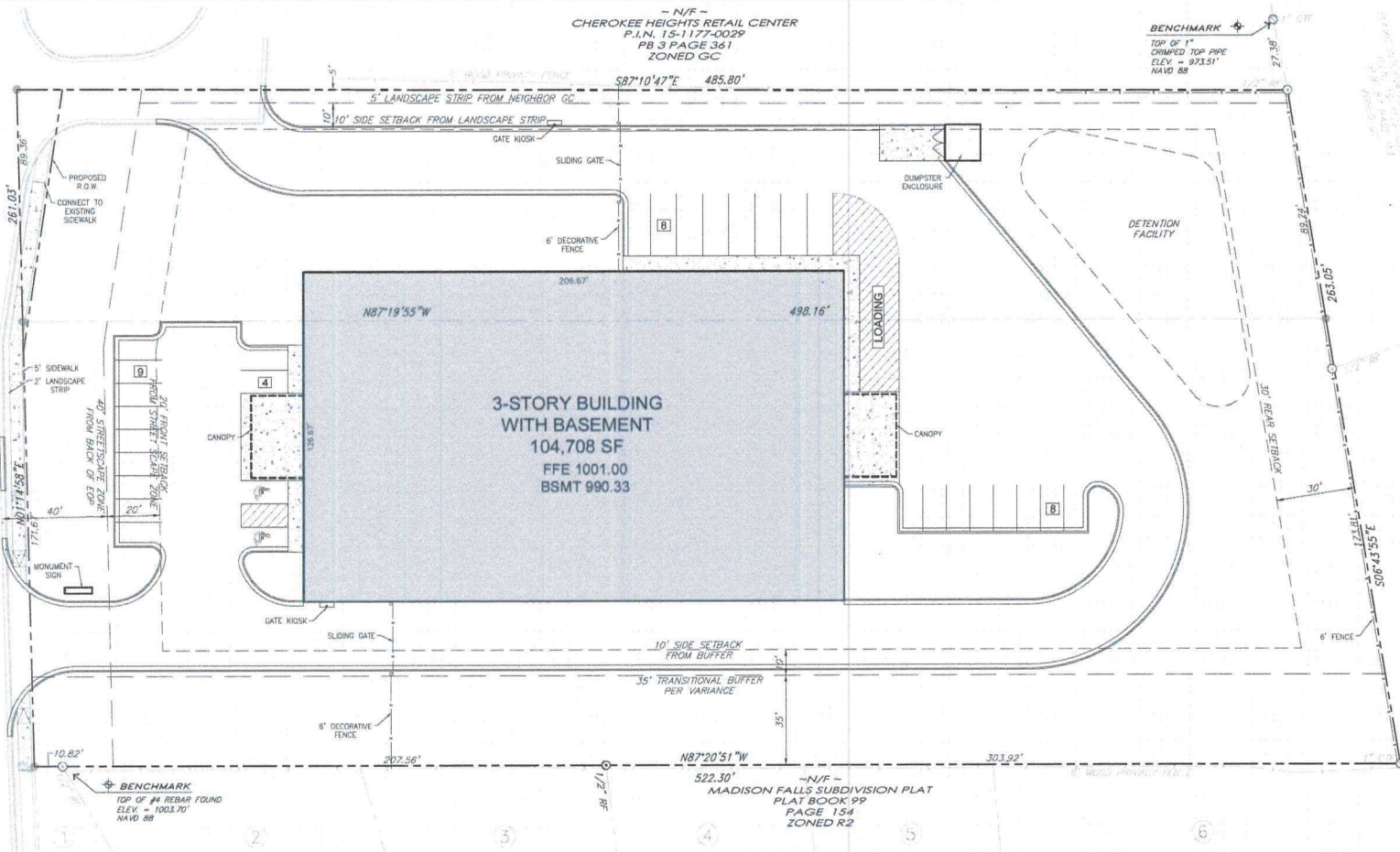


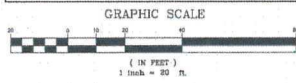
SOUTH CHEROKEE LANE
(40' PUBLIC R/W)



SITE DATA	
SITE ADDRESS:	3200 SOUTH CHEROKEE LANE
SITE AREA:	3.01 ACRES (131,157 SF)
CURRENT ZONING:	GC (GENERAL COMMERCIAL)
OVERLAY:	PARKWAY OVERLAY DISTRICT
PROPOSED USE:	SELF STORAGE (CLIMATE CONTROLLED)
PROPOSED BUILDING:	104,708 SF
MAXIMUM HEIGHT:	55' WITH VARIANCE
SETBACKS	
STREET SCAPE:	40'
FRONT YARD:	20'
SIDE YARD:	10'
REAR YARD:	30'
BUFFERS:	35' GRADED AND VEGETATED WITH VARIANCE
PARKING SUMMARY	
MINIMUM SPACES:	0.25 SPACES PER 1,000 SF = 26 SPACES
MAXIMUM SPACES:	10% OVER MIN. = 26 X 1.10 = 29 SPACES
PROVIDED SPACES:	
REGULAR SPACES:	27
HANDICAP SPACES:	2
TOTAL SITE SPACES:	29
LOADING SPACES: 1 - 13.5'x60' SPACE	



CAUTION
THE UTILITIES SHOWN HEREON ARE FOR THE CONTRACTORS CONVENIENCE ONLY. THERE MAY BE OTHER UTILITIES NOT SHOWN ON THESE PLANS. THE ENGINEER ASSUMES NO RESPONSIBILITY FOR THE LOCATIONS SHOWN AND IT SHALL BE THE CONTRACTOR'S RESPONSIBILITY TO VERIFY ALL UTILITIES WITHIN THE LIMITS OF THE WORK. ALL CHANGES MADE TO EXISTING UTILITIES BY THE CONTRACTOR SHALL BE THE SOLE RESPONSIBILITY OF THE CONTRACTOR.



paradigm
Engineering Services, Inc.
Seven Shiloh Park
Atlanta, GA 30308
www.paradigmeng.com

Project No. P-7177
Design By: WBO
Drawn By: LBF
Checked By: WBO
Date: 8/29/17
Scale: 1" = 20'

Date	Revision

TAYLORTHEUS HOLDINGS INC.
1213 LADY STREET, SUITE 500
COLUMBIA, SC 29201
OFFICE 803-358-1000

**ZONING SITE PLAN
EXTRA SPACE STORAGE**
3200 SOUTH CHEROKEE LANE
LAND LOT 1177, 15TH DISTRICT
WOODSTOCK, GEORGIA 30188

Drawing No. **72**

RECEIVED SEP 01 2017